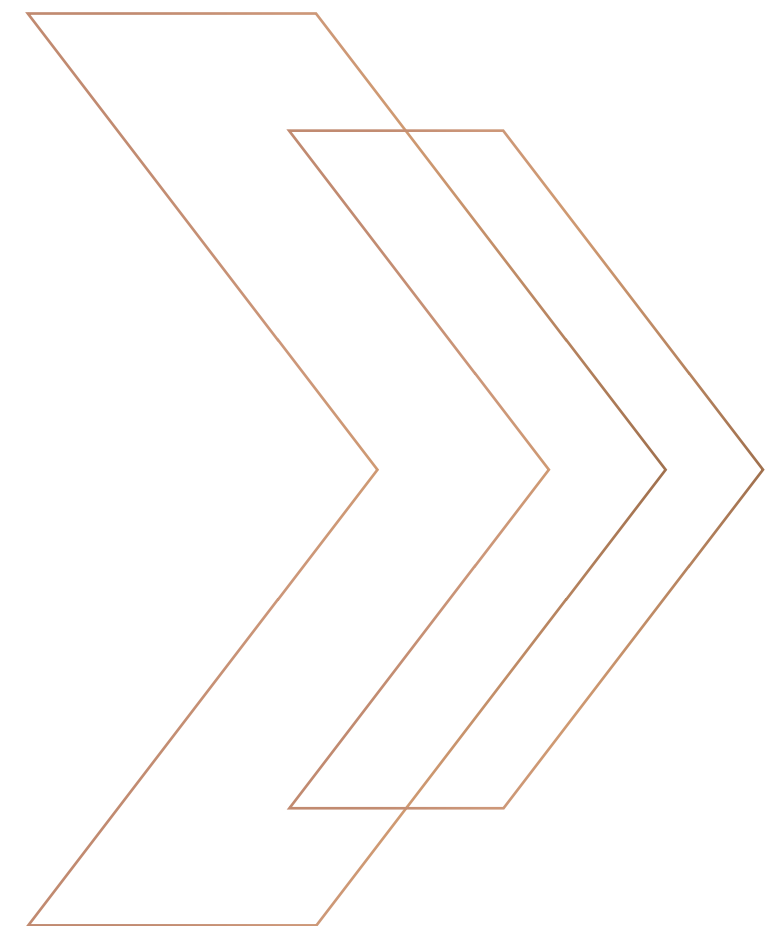




تلالة
ريزيدنس
TELALAH RESIDENCE

كنان
KINAN



Harmony With Nature !





Live An Exceptional
Experience





Kinan... Enriching Lives

Kinan started its journey two decades ago with solid footsteps and a thorough vision to develop communities characterized by joyful, unique lifestyles and unprecedented competition. As one team, aiming to provide high-quality real estate products satisfying our customers' needs, enriching their lives, and make them proud of their homes, we worked hard to understand the market insights and desires in order to exceed expectations.





Telalah Residence, Living A New Horizon.

It was never a spur moment, it was through with attention to detail through rigorous procedures & planning to ensure bestowing an extraordinary “being home” experience to our customers. The project covers the finest modern villas with various designs that provide distinctive architectural & residential characteristics, in addition to spaces & service integration to suit the lifestyle of our clients that represent their level of aspiration to live in the elite community with harmony and serenity. The project contains 165 Villas in six key design models, each design model has two different facades that suit all tastes. Telalah Residence’s villas were designed to form a high privacy for residents by enjoying the front & backyard vibes as well as motivating them to apply a lifestyle that enriches their experience through exercising.



Prime Location..

The project is located in a privileged location in the north of Riyadh city where the world is a few steps away and reaching services in a few minutes.

The most important roads surrounding the project, King Salman Road, Abu-Baker Al-Siddique Road & Othman Bin Affan Road which all lead to various destinations like King Khalid Airport, KAFD & Princess Noura University.

18 min
To Kingdom Hospital

30 min
Kingdom Tower

25 min
King Abdullah
Financial District

26 min
Diriyah

18 min
To King Khalid Airport

15 min
To Saudi Media City (Shamas)

15 min
Prince Nourah Bint
Abdulrahman University

25 min
Riyadh Front





Few Steps From...





The Luxurious Lifestyle You Dreamt Of..

Inspired by its charming location and hilly nature, Telalah Residence was designed to be a home that befits you and your ambitions in a surrounding that looks like you with public facilities and spaces where you live your imagination & senses to the fullest, uniquely & exceptionally!



All the pictures in this document are demo not actual



Unique Living Experience..

We are unique at providing versatility of designs to cater your aspirations and make your home recognizable. The project provides various designs, crafted carefully by the office of engineer Bandar Al-Mansour, 6 key models are designed in terms of distribution and spaces, besides, each model is designed with two different facades that suit all tastes on land areas ranging between 200 m2 – 650 m2.

TELALAH RESIDENCE



All the pictures in this document are demo not actual

Model
(A)



Model A-A



Model A-B



All the pictures in this document are demo not actual

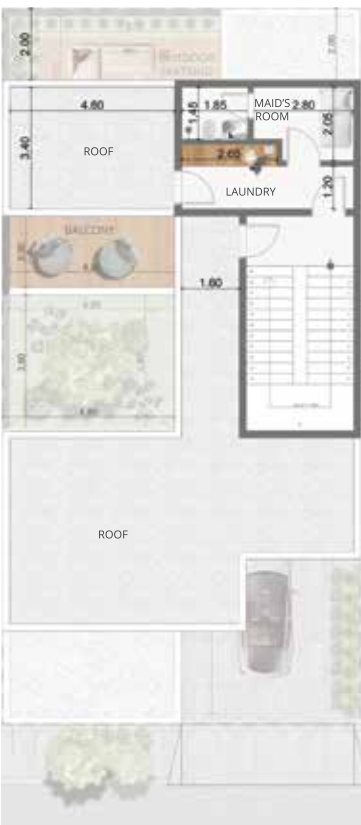
Ground Floor



First Floor



Roof



Floor	Space Area
Land Area	200 m2
Total Build-up Area	315 m2
Ground Floor	150 m2
First Floor	124 m2
Roof	41 m2

All the pictures in this document are demo not actual

Model (B1)



Model B1-A



Model B1-B



All the pictures in this document are demo not actual

Ground Floor



First Floor



Roof



All the pictures in this document are demo not actual





Model B2-A



Model B2-B



Floor	Space Area
Land Area	300 m2
Total Build-up Area	480 m2
Ground Floor	222 m2
First Floor	179 m2
Roof	79 m2

Model
(c1)





Model C1-A



Model C1-B

All the pictures in this document are demo not actual



MODEL (A)	
Floor	Space Area
Land Area	375 m2
Total Build-up Area	567 m2
Ground Floor	275 m2
First Floor	209 m2
Roof	83 m2



MODEL (B)	
Floor	Space Area
Land Area	375 m2
Total Build-up Area	533 m2
Ground Floor	264 m2
First Floor	186 m2
Roof	83 m2



All the pictures in this document are demo not actual

Model
(C2)



Model C2-A



Model C2-B



All the pictures in this document are demo not actual

Ground Floor



First Floor



Roof



Floor	Space Area
Land Area	375 m2
Total Build-up Area	560 m2
Ground Floor	250 m2
First Floor	207 m2
Roof	103 m2

Model
(D)



Model D-A



Model D-B



All the pictures in this document are demo not actual



Floor	Space Area
Land Area	400 m2
Total Build-up Area	520 m2
Ground Floor	249 m2
First Floor	180 m2
Roof	91 m2

All the pictures in this document are demo not actual

تلالة
ريزيدنس
TELALAH RESIDENCE

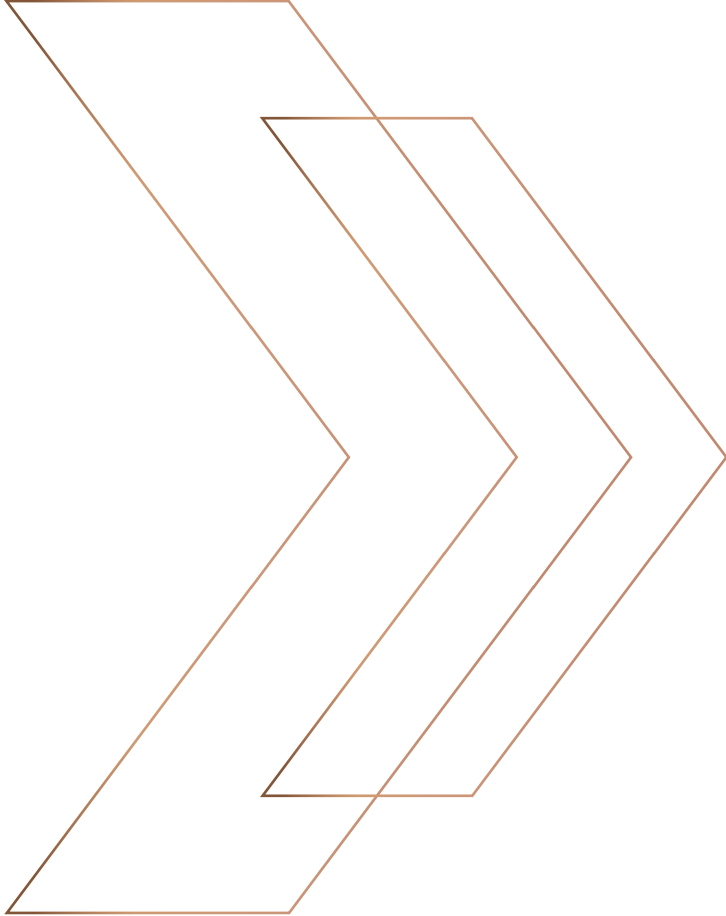
Reach your dream to live in the
luxury of Telalah Residences
that befits you made easy...

We are ready to receive your
enquiries and book your
appointments at the sales
center by calling our unified
number ...



920002880





تلالة
ريزيدنس
TELALAH RESIDENCE

كنان
KINAN

www.kinan.com.sa